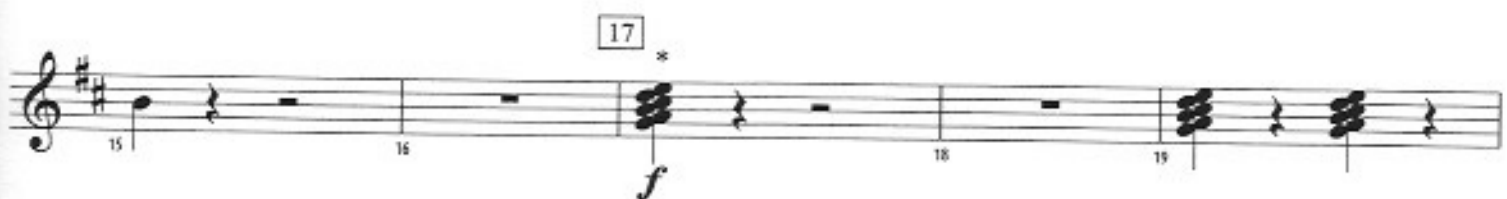


At the Edge of Chaos

E♭ ALTO SAXOPHONE

By Roland Barrett (ASCAP)

Driving



* (Measures 17 through 24) Your director will explain.

© 2013 BELWIN-MILLS PUBLISHING CORP. (ASCAP),
a division of ALFRED MUSIC PUBLISHING CO., INC.
All Rights Reserved including Public Performance